



# 1CE (ONCE) Identity Management

**ThIRU**





# 1CE Identity Management

**ThIRU**

## BoundaryLess Identities

The single dominant fact of this century is the proliferation of users of systems, networks and connected devices across the globe between organisations and applications with potential access to sensitive data. The challenge of identity, access and authentication across systems and organisations is daunting, complex interrelated high risk issue in this digital world.

ThIRU Labs is addressing and delivering innovative solutions in this complex area of human capital threat both external and insider threats. We offer a continuous human security posture risk mitigation. We are focused on the customer and the customer's, customers and have invested significant resources internally to give you the peace of mind while you run your business.



Dr Suresh Hungenahally, CEO  
and Founder, ThIRU Labs

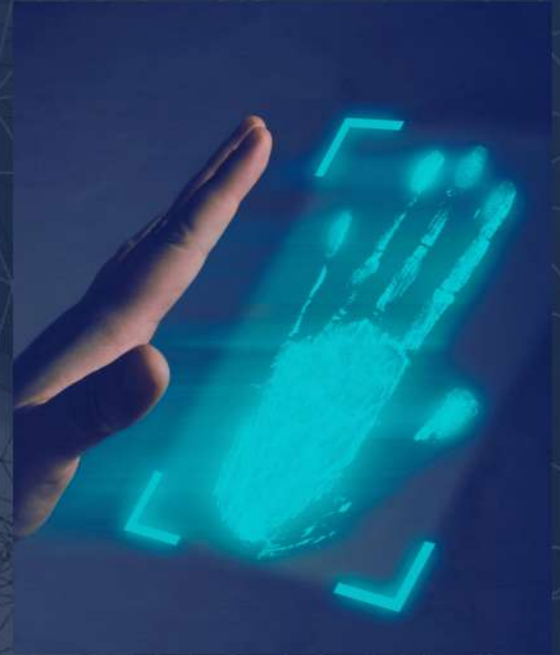


# 1CE Identity Management

**THIRU**

The five tenets of 1ce are:

- Authentication and Authorisation
- Identity life cycle
- Organisational setup from large enterprises to SMSE
- Application enablement, provision and de-provision, including RBAC
- Work flow



1ce protects and treats both external and internal threats in a single platform.





# 1CE Identity Management

**ThIRU**

## Identity Lifecycle

Full control on identity attributes & lifecycle

- Onboard new employees
- Finalize role changes promptly
- Offboard with confidence
- Reduce the possibility of errors



## Organisation Setup

Set up companies from small, medium and enterprise organisations.

- Sole company
- Private company, small to medium
- Enterprise
- Franchise
- Multi-region





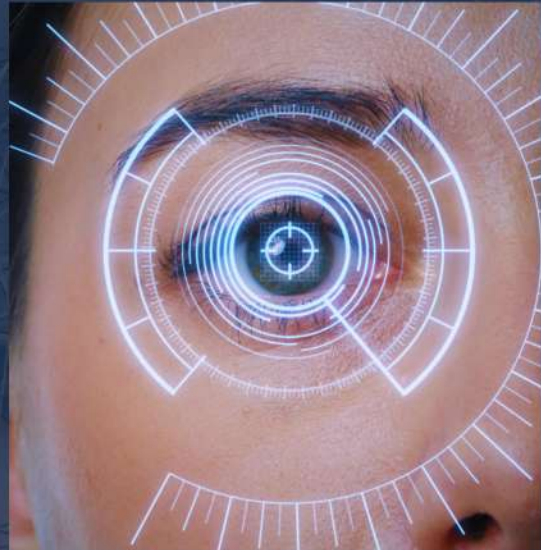
# 1CE Identity Management

**ThIRU**

## Authentication and Authorization

Secure authentication and authorisation.

- Conditional Access policies that require a user to be in a specific location.
- Multi-Factor Authentication on a specific device.
- Enabling a user to sign in once and then be automatically signed in to all applications.





# 1ce Identity Management

**ThIRU**

## Application Services

Add and applications for SSO on-prem, SaaS , legacy etc

- Users can single sign-on for approved applications
- Uses a variety of protocols including SAML, SWA, Oauth
- Web-based, legacy, client-server, and device-level access



## Workflow

User approval, application RBAC, and business flows, all from one place.

- Business workflow for user management
- Workflow for application approvals

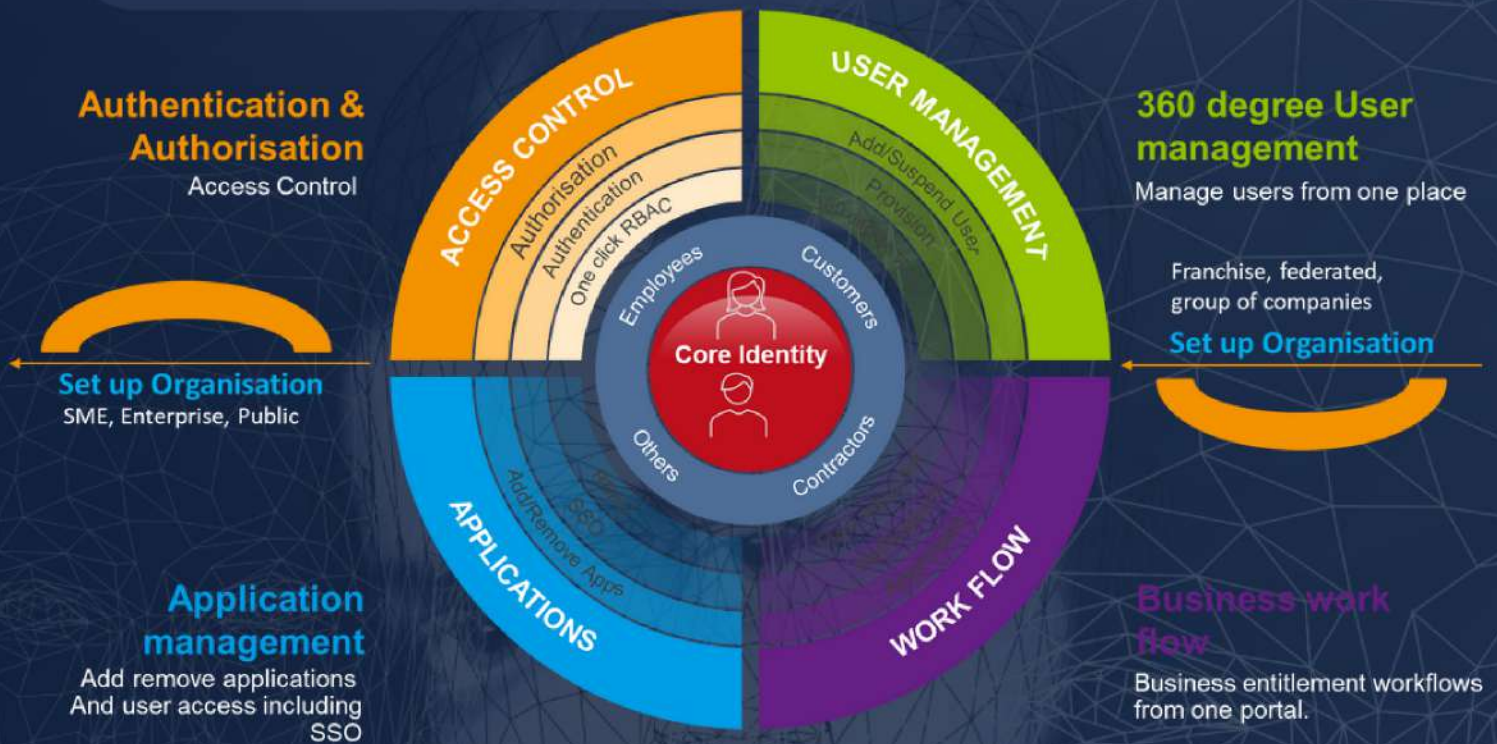




# 1CE Identity Management

**THIRU**

## Boundaryless Identities



1. Flight Risk Users
2. Data Hoarding/Collectors
3. Remote Workforce Monitoring
4. Off-Hour Activities
5. Unauthorized Access to Critical Assets
6. Network Scan / Wanderer
7. Privileged Access Misuse
8. Account Compromise
9. Unusual Host Processes Execution
10. Disgruntled Behavior
11. Data or Service Destruction / Disruption
12. Data Exfiltration

1. HR Policy Violation Events
2. HR Performance Review Ratings
3. HR User Traits
4. Infosec Watchlist Users
5. External Background Verification



**THIRU**



**AUSTRALIA  
NEW ZEALAND  
UAE  
QATAR  
INDIA**

**SURAKSHA PTY LTD.  
305, 65 VICTOR CR  
NARRE WARREN VICTORIA  
AUSTRALIA 3805  
Email : info@suraksha.com.au  
www.thirulabs.com**



**Transport  
& Infrastructure**



**Financial services  
Banking  
Insurance  
Investment Houses**



**Government  
Departments  
Agencies  
Statutory Authorities**



**Critical Infrastructure  
Electricity  
Water  
Airports  
Infrastructure  
Telecommunications**



**Health  
Hospitals  
Community Centres  
Field Emergency**



**Defense  
Airforce  
Land force  
Navy**



Suraksha Pty. Ltd

PUREPLAY CYBER SECURITY



Criscod

AUDIT/ASSURANCE/TRAINING  
/CRYPTO



MCI India Pvt Ltd  
CYBER INNOVATIONS COMPANY

Miyana Cyber Innovations Pvt.  
Ltd

INNOVATIONS & DELIVERY